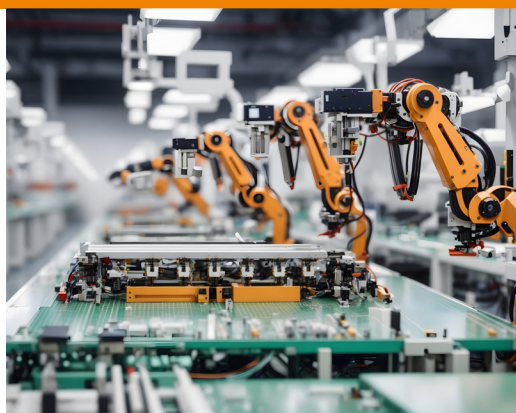


PNEUMATIC GREASE PUMP

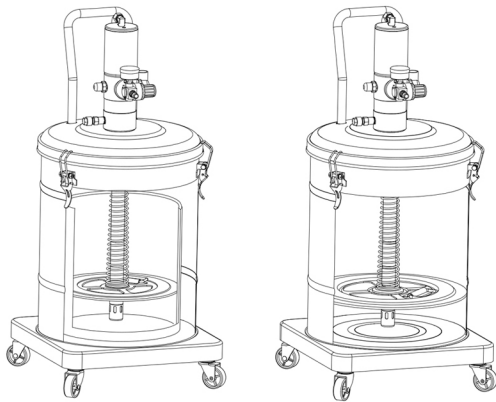


Features

- Grease pump with simple structure design, key components adopting engineering plastic, Easier for maintenance and long service life.
- Cylinder with integration process in CNC machining center, inside and outside with special oxidation surface treatment, high wear resistant and durable.
- Steel pressure oil plate assembly designed in Pagoda structure, less residual grease oil in the barrel after running out of a barrel of oil which greatly improves the utilization rate of grease oil.
- Key sealings with imported material, key components with hard chrome plating treatment, high quality and long lifetime.
- Detachable filter net design, better filtering effect and easy for maintenance.
- The company has passed ISO9001 quality system certification, EU CE safety certification, and the factory organises the production of products in accordance with international standards.



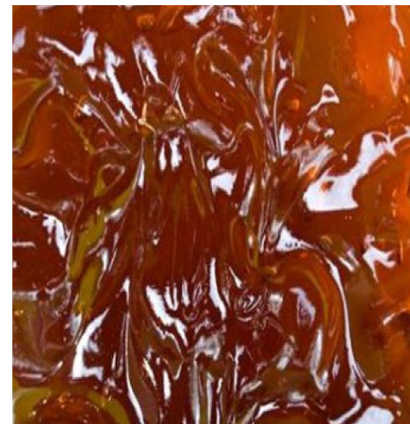
Filling method



- Standard barrel of grease can directly be put into the barrel
- Bulk grease in the barrel

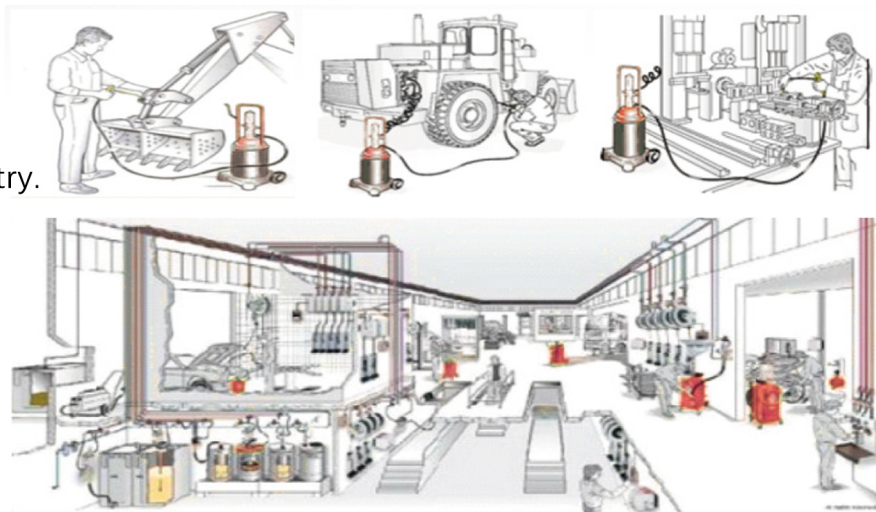
Grease Recommended

- Use lithium grease according seasons (Mix some engine oil before use)
- NLGI 0#-1#(Winter)
- NLGI 1#-2#(Spring&Autumn)
- NLGI 2#-3#(Summer)



Application

- Mechanical Industry.
- Automotive repair and maintenance industry.
- Aerospace and marine.
- Agriculture and construction.
- Machine tool industry.
- Maintenance of industrial equipment.





MODEL: JH-1401

PARAMETRIC

Pressure Ratio	40:1
Air Pressure	6-8BAR; 87-116PSI
Grease Output	1.0L/MIN
Outlet Pressure	240-320BAR; 3480-4640PSI
Weight	8KGS
Box Size	160x160x645
Connecting Pole Length	275mm

PACKAGE SIZE

Model	Barrel Capacity L/KG	Package Size mm	Gross Weight KGS	Net Weight KGS
JH-675A	40	445x445x885	22	19.7
JH-675B	45	445x445x885	22	19.7



JH-675A

40L BARREL
CAPACITY



JH-675B

45L BARREL
CAPACITY



MODEL: JH-1501

PARAMETRIC

Pressure Ratio	50:1
Air Pressure	6-8BAR; 87-116PSI
Grease Output	0.85L/MIN
Outlet Pressure	300-400BAR; 4350-5800PSI
Weight	5KGS
Box Size	680x150x150
Connecting Pole Length	396mm 730mm;940mm available

PACKAGE SIZE

Model	Barrel Capacity L/KG	Package Size mm	Gross Weight KGS	Net Weight KGS
JH-608	12	430x400x810	18.5	17.3
JH-609	20	445x445x837	15.3	13
JH-607B	25	430x400x810	18.5	17.3
JH-609A	35	445x445x755	17.5	14.8
JH-6010	40	430x400x810	17.5	14.8



JH-608

12L BARREL
CAPACITY



JH-609

20L BARREL
CAPACITY



JH-607B

25L BARREL
CAPACITY



JH-609A

35L BARREL
CAPACITY



JH-6010

40L BARREL
CAPACITY



MODEL: JH-2501

PARAMETRIC

Pressure Ratio	50:1
Air Pressure	6-8BAR; 87-116PSI
Grease Output	0.85L/MIN
Outlet Pressure	300-400BAR; 4350-5800PSI
Weight	4KGS
Box Size	680x150x150
Connecting Pole Length	396mm
	730mm;940mm available

PACKAGE SIZE

Model	Barrel Capacity L/KG	Package Size mm	Gross Weight KGS	Net Weight KGS
JH-609A	12	320x360x857	12.5	11
JH-6010A	30	430x400x810	14.5	11.8
JH-606D	40	430x400x810	16.5	13.8
JH-6010B	45	445x445x885	23	20.7



JH-609A

12L BARREL
CAPCAITY



JH-6010A

30L BARREL
CAPCAITY



JH-606D

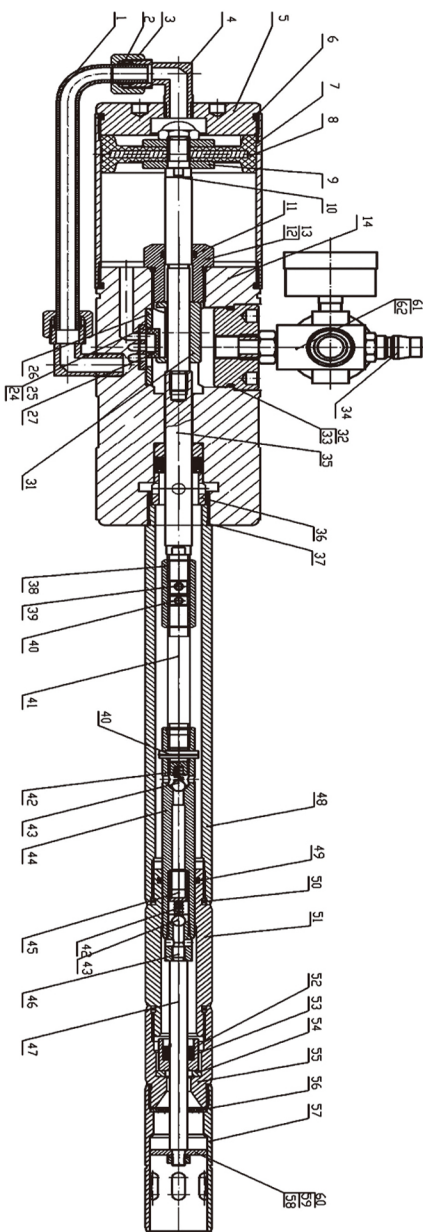
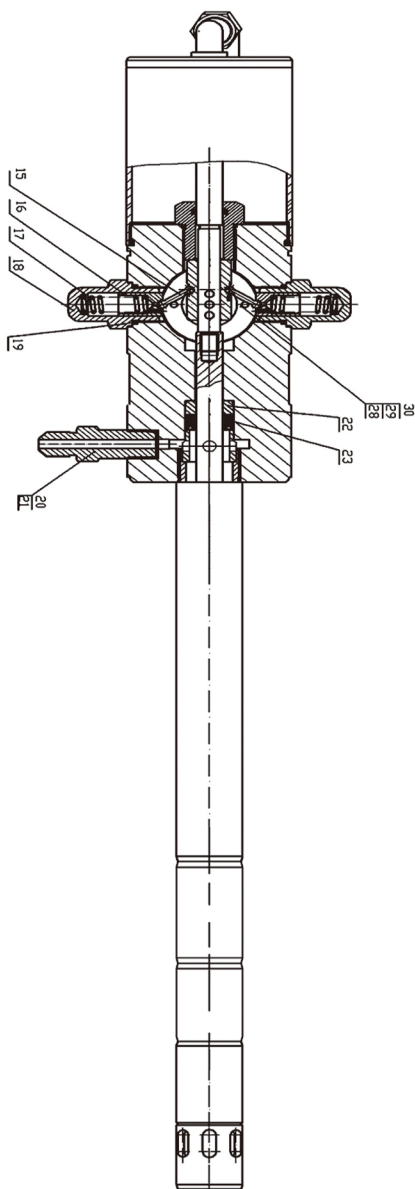
40L BARREL
CAPCAITY



JH-6010B

45L BARREL
CAPCAITY

—STRUCTURAL DIAGRAM



NO.	NAME	SIZE	NO.	NAME	SIZE	NO.	NAME	SIZE	NO.	NAME	SIZE
01	Air Tube	\	17	Valve Sleeve	\	33	O Seal Ring	Outer Φ46x2.5	49	O Type Seal Ring	Inner Φ14x2.65
02	Acron Nut	Φ12x1.5	18	Slide Seating	S24	34	Air Inlet Connector	G1/4"	50	O Type Seal Ring	Inner Φ20x2.65
03	Nut	S19	19	O Type Seal Ring	Outer Φ17x2.65	35	Piston Connector	Φ14	51	Pump Body	Φ30.2
04	Bend Connector	\	20	Grease Outlet	S17	36	Seal Sleeve	Φ25x4	52	Check Valve	Φ18
05	Cylinder Cover	Φ75	21	Brass Gasket	\	37	O Seal Ring	Outer Φ24x2.4	53	U Type Oil Seal	8x14x6
06	O Type Seal Ring	Inner Φ70x3.1	22	Sealing Gasket	Φ22	38	Adjust Nut	S13	54	Check Valve Gasket	Φ20
07	Cylinder	Φ75x2.5	23	U Type Seal Ring	Φ12xΦ22x8	39	Open Kit	Φ3x20	55	Grease Inlet Seating	Φ30.2
08	Piston	\	24	Gas Supplier Seating	Φ26	40	Roll Spring Kit	Φ3x15	56	Grease Inlet Ring	Φ26
09	Gasket	Φ32x9.9	25	Gas Supplier Gasket	0.5	41	Connection Rod	Φ10	57	Grease Inlet Pipe Sleeve	Φ32x5
10	Piston Pole	Φ16	26	Clap Board	Φ43	42	Grease Inlet Spring	Φ4x12	58	Loading Board	Φ26
11	O Type Seal Ring	Outer Φ16x2.4	27	Gas Supplier Seating	\	43	Steel Ball	Φ6	59	Nut	M6
12	Seal Screw	S27	28	Damping Spring	\	44	Piston Pole	Φ15	60	Spring Gasket	Φ4
13	O Type Seal Ring	Inner Φ20x1.8	29	Damping Spring	M4x10	45	Spring Seating	Φ10	61	Regulator Connector	S16
14	Gas Supplier	Φ75	30	Spring Gasket	Φ4	46	Single Direction Valve	S13	62	Regulator Connector	\
15	Reverse Valve	\	31	Pulling Sheath	Φ20	47	Loading Pole	Φ8	63	Muffler	Φ30
16	Valve sleeve	Φ14	32	Gas Room Cover	ZG1/4"	48	Connecting Hose	Φ32x5.5			

Troubleshooting Maintenance



Malfunction Description	Reason of Malfunction	Solution
1. Pump stops working (Normal stoppage of pumps that do not embrace the state of pressure equilibrium)	Failure of the reversing part	Check reversing parts for jamming, adjust or replace
2. No grease suction	1、 Loose lifting plate	Install the lifting plate and tighten the nut.
	2、 Foreign matter accumulated in the oil inlet groove	Check and clear
	3、 Grease viscosity is too high or too thick	Select grease according to season, generally use 0#-1# lithium grease in winter,1#-2# lithium grease in spring and autumn, and 0#-1# lithium grease in summer.
	4、 The valve has a foreign object stuck in it.	Check and clear
	5、 Insufficient grease in drumst.	Replenish Grease
	6、 Worn pump body O-rings	Replacement of O-rings
3. Leak air or gas	1、 Slide and valve seat contact surface wear	Remove and grind separately to achieve sealing requirements
	2、 Slider shifted, limit plate screws loose	Disassemble the adjustment and tighten the screws
4. Insufficient output oil pressure	1、 Clogging in a part of the output pipe, grease delivery is not smooth	Check the clogged area and clean and unblock it.
	2、 Partial blockage of oil circuit in Grease gun	Disassemble the grease gun and clean and unblock the blocked area.
	3、 The two check valves in the plunger rod are jammed with foreign objects.	Remove plunger rod and clean and unblock
	4、 Foreign matter between check valve and inlet valve seat	Disassemble the oil inlet valve seat to clean and unclog

PROFESSIONAL GREASE PUMP MANUFACTURER

JIAxing JIANHE MACHINERY CO.,LTD.

- Factory Address: No.3439 Linggongtang Road, Nanhu District, Jiaxing City, Zhejiang Province, China
- Tel: 0573-86773755
- Fax: 0573-83287556
- Web: www.jianhelube.com
- Email: Phoebechien@jianhelube.com

